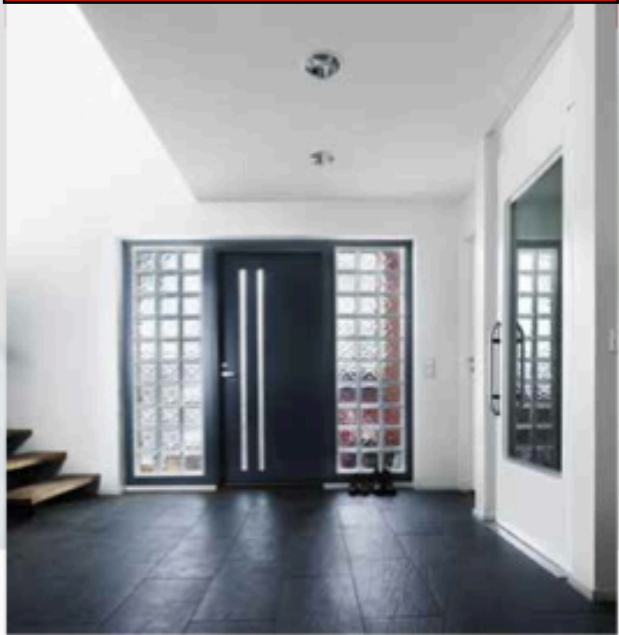




A 6000 Domestic Platform Lift

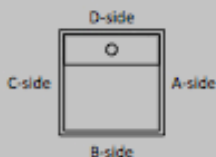


Choose among several different sizes, glass walls and colours. This is the choice for those of you who would like to customise the lift to your own liking.

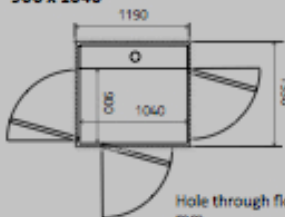
Several advantages offered by Aritco 6000:

- Design, sizes and options created for a home environment
- Minimum interventions in the house
- Option for a "half-height door" on the top floor
- 95% recyclable materials
- 'A' rated energy consumption according to VD14707
- Patented screw/nut technology (no oil that can leak)
- The lowest maintenance and operating costs on the market

A 6000 Domestic Platform Lift

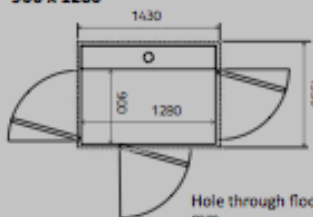


900 x 1040



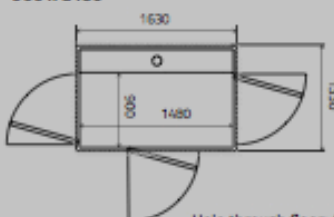
Hole through floor: 1330x1190 mm
(No door on B-side: 1305x1190)
Platform: 900x1040 mm
Load: 250 kg

900 x 1280



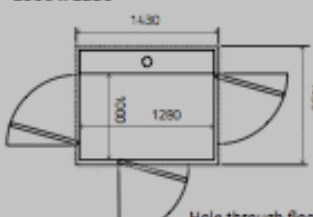
Hole through floor: 1330x1430 mm
(No door on B-side: 1305x1430)
Platform: 900x1280 mm
Load: 410 kg

900 x 1480



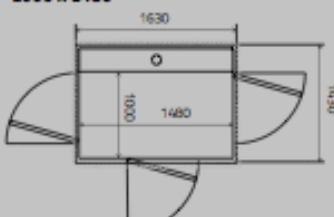
Hole through floor: 1330x1630 mm
(No door on B-side: 1305x1630)
Platform: 900x1480 mm
Load: 410 kg

1000 x 1280



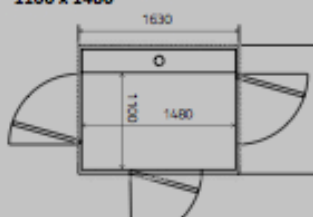
Hole through floor: 1430x1430 mm
(No door on B-side: 1405x1430)
Platform: 1000x1280 mm
Load: 410 kg

1000 x 1480



Hole through floor: 1430x1630 mm
(No door on B-side: 1405x1630)
Platform: 1000x1480 mm
Load: 410 kg

1100 x 1480



Hole through floor: 1530x1630 mm
(No door on B-side: 1505x1630)
Platform: 1100x1480 mm
Load: 410 kg

Dimensions

Platform width.....900-1100 mm
Platform length.....1040-1480 mm
Travel height.....250-13000 mm

Hole through floor width.....1305-1530 mm
Hole through floor length.....1190-1630 mm
Top height.....2240 mm

Height of door opening*..1800, 1900, 2000, 2100 mm
Height of door opening**.....1100-1600 mm
Width of door opening.....800, 900 mm

*Full-height door **Half-height door

Drive system: Patented screw/nut system

Rated speed: max 0.15m/s

Platform control: "Hold to run", the button has to be kept pressed during the ride

Landing control: One-touch call

Technical compliance: European Machinery Directive 2006/42/EC
European standard EN 81-41

Rated load: 250-410 kg / 2-5 persons

Number of stops: max 6

Number of doors: max 2 doors per floor

Pit: 50mm (no pit is required when there is a threshold)

Environment: Indoors

Power supply: 1-phase 230V 50Hz/9A/16A slow
3-phase 230V 50Hz/9A/16A slow
3-phase 400V 50Hz/5.2A/16A slow

Emergency lowering: Battery-powered

Control voltage: 24V

Motor: 2.2kW

For more information, please, refer to our product catalogue or visit our website.

Due to the continuous product development at the company, the information may change without prior notice.

Access & Platform Lifts Ltd, 209 Carlton Road, Worksop, S81 7HN

Tel 01909 486704

www.liftsforhouses.co.uk sales@liftsforhouses.co.uk

